



JoinZeal Industry & Trading Co., Ltd.

精诚于专，久磨于恒
SINCERE TO THE DESIGNED AVENUE TO THE LETTER

JoinZeal Industry & Trading Co., Ltd.

Tel: +86-714-6506198

Fax: +86-714-6506198

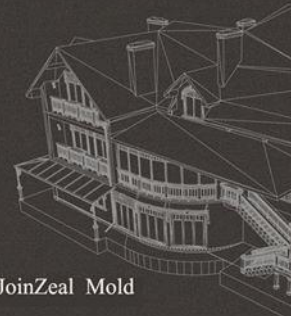
WhatsApp/Wechat: 0086-1818600 6198

QQ: 2104674460

Email: sales@joinzeal.net

Http://www.joinzeal.net

Address: Huangshi, Hubei, China 435000



JoinZeal Mold

品质 / 专注 / 质量 / 诚信

技术可以改变世界

TECHNOLOGY CAN CHANGE THE WORLD

我们的目标：做顶级的挤出模具制造商；

我们的精神：专业、高效、守信；

我们的风格：快速、精确、持久。

Our vision: to be the top of extrusion mould manufacturer;

Our spirit: professional, efficiency, faith;

Our style: quick, accurate, durable.

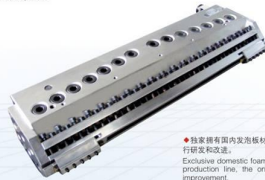


品质 / 专注 / 质量 / 诚信
Quality / Focus / Quality / Credibility

PVC结皮发泡板材模具 PVC CRUST FOAMED BOARD MOULD

WPC 建筑模板
PVC 结皮发泡板
PVC 木塑板
PVC 硬板、片材
WPC Building template
PVC crust foamed board
PVC wood-plastic panel
PVC board, sheet

◆主要用途:
橱柜板、建筑模板、家具板材、卫生洁具柜板等。
MAIN APPLICATION:
Cabinet board, building template, furniture board, sanitary ware cabinet board etc.



◆独家拥有国内发泡板材模具调试生产线, 不断进行研发和改进。
Exclusive domestic foam sheet mould debugging production line, the ongoing development and improvement.

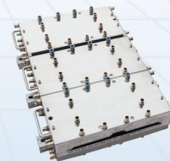
◆可实现在线调节板材厚度, 无需更换零件。
It can realize the on-line adjustment board thickness, no need to replace parts.



◆衣架式流道设计使物料均匀, 适合于各种不同配方。
The clothes rack channel design makes the material evenly, suitable for a variety of different formula.



◆为客户从材料配方, 操作技术, 设备选型, 模具技术等方面提供“交钥匙”工程。
For the customer to the material formulation, operation technology, equipment selection, mould technology and other areas to provide "turn-key" project.



品质 / 专注 / 质量 / 诚信
Quality / Focus / Quality / Credibility

中空格子板模具、木塑门板模具 HOLLOW GRID BOARD EXTRUSION MOULD, WPC DOOR PANEL EXTRUSION MOULD

PVC 木塑门板
PVC 格子板
PVC 木塑板
PVC-WPC door panel
PVC hollow board
PVC profile grid board
Special hollow grid board

◆主要用途:
中空整体门、折叠门、中空橱柜板、家具中空板材等。
MAIN APPLICATION:
Hollow overall door, folding door, Hollow cabinets board, furniture hollow board etc.



◆应用性强
衣架式流道, 出料更均匀, 更易成型, 不堵料不废料。
THE APPLICATION OF STRONG
Hanger type flow passage, a discharge more uniform, More easy moulding, don't lag material paste.

◆易操作
拆换方便且定位精准, 更换部件即可生产不同壁厚产品。
EASY OPERATION
Easy disassembly and positioning precision, replacement of parts can be of different wall thickness products.

◆省电节能
电加热棒植入模具内部, 省电50%。
THE ENERGY SAVING
The electric heating rod implantation within the mould, saving 50%.



品质 / 专注 / 质量 / 诚信

PVC木塑、发泡模具

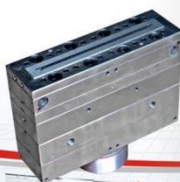
PVC WOOD PLASTIC COMPOSITE, FOAMING MOULD

PVC+木粉
PVC发泡
PE发泡
PVC发泡：内外精度，共挤发泡等。
PVC+wood powder
PVC foaming
PE foaming
PVC foaming: inner and outer crust; extrusion
foaming etc.

◆主要用途：
建筑装饰工程：线条、包木墙板、发泡百叶窗、吊
顶材料、镜框、室内楼梯、扶手等。

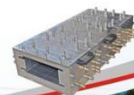
MAIN APPLICATION:
Building decoration door frames, lines, imitation
wood floor, foaming shutters, console top material,
spectacle frame, indoor staircases, handrails, etc.

◆以专业的配方技术为基础，可提供各类复杂断面
及不同壁厚的模具。
The basis of professional formula technology, can
provide all kinds of complicated cross-section
and mould with different wall thickness.



◆为客户从材料配方、操作技术设备选型、模具技术
等方面提供“交钥匙”工程。
For the customers to material formulation,
operation technology, equipment selection, mold
technology to provide "turn-key" project.

◆在不改变模具的前提下，通过调整配方，可获得不同
密度的制品。
In the premise of not changing the mould, by
adjusting the formula, can obtain products with
different density.



品质 / 专注 / 质量 / 诚信

PP+PE 木塑模具

PP+PE WOOD PLASTIC MOULD

PE+木粉
PP+木粉
PE+wood powder
PP+wood powder

◆主要用途：
园林景观：凉亭、护栏、栈道板、葡萄架、工业托盘、门
框、建筑装饰板材、发泡板、家具板材等。

MAIN APPLICATION:
Landscape, a pavilion, guardrail, plank road board, a
grape, industrial tray, door plank, architectural
decoration board, foam board, furniture board, etc.



◆模具先进的冷却系统设计，保证冷却效果的同时，能方便
快速的更换水管及清理水道。
Advanced mold cooling system design, to ensure that
the cooling effect at the same time, the quick and easy
replacement of the pipe and clean water.

◆独特的芯棒耐磨处理技术，有效提升模具的耐磨性能。
Unique mandrel wear-resisting processing technology,
effectively improves the wear resistance of the mould.



塑料异型材模具

PLASTIC PROFILE EXTRUSION MOULD

PVC 塑钢门、窗、护栏。
PVC 软硬共挤：PUMMA、ASA等材料多色共挤、发泡共挤等。
PVC 挂槽、线管、通讯管材、一模多腔管材、发泡管、镀锌管、板管等。

PVC profile door, window, guardrail.
PVC soft hard co-extrusion. Materials such as multi-color co-extrusion, foaming co-extrusion etc.
PVC cable bunking, line pipe, communications pipe; a multi cavity pipe; foamed pipe; winding pipe; board tape etc.

◆主要用途：

平开门、窗、推拉门、窗、百叶窗、中悬窗、塑钢彩色门、窗、护栏、线槽、线管等。

MAIN APPLICATION:

side-hung door, window, sliding door, sliding window, shutter, hanging window, / pic profile color door, window, guardrail, slot line pipe and so on.

◆每年近千套的模具制作经验，经过不断改进使模具能适应多种配方及不同的设备。

The mould every year nearly one thousand sets of production experience, through continuous improvement to make the mould can adapt to a variety of formulations and different equipment.



◆合理的尺寸取值及水气排布，保证模具的连续生产能力。
The size and moisture value of reasonable arrangement, and ensure continuous production capacity of mold.



◆定型模型采用雕刻成型代替传统的线切割磨，产品可精度平整度更能得到保证。
Setting model is adopted instead of the traditional sculpture modeling line cutting, product visual surface flatness can be better guaranteed.



◆精良的加工设备及先进的制作工艺，保证了模具的复位精度。

The excellent processing equipment and advanced production technology, to ensure the return precision mould.